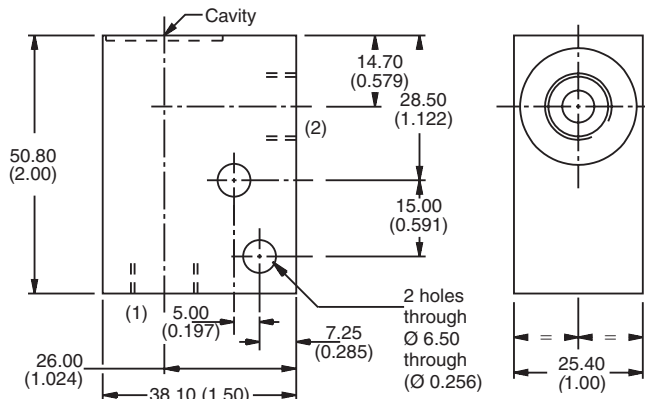
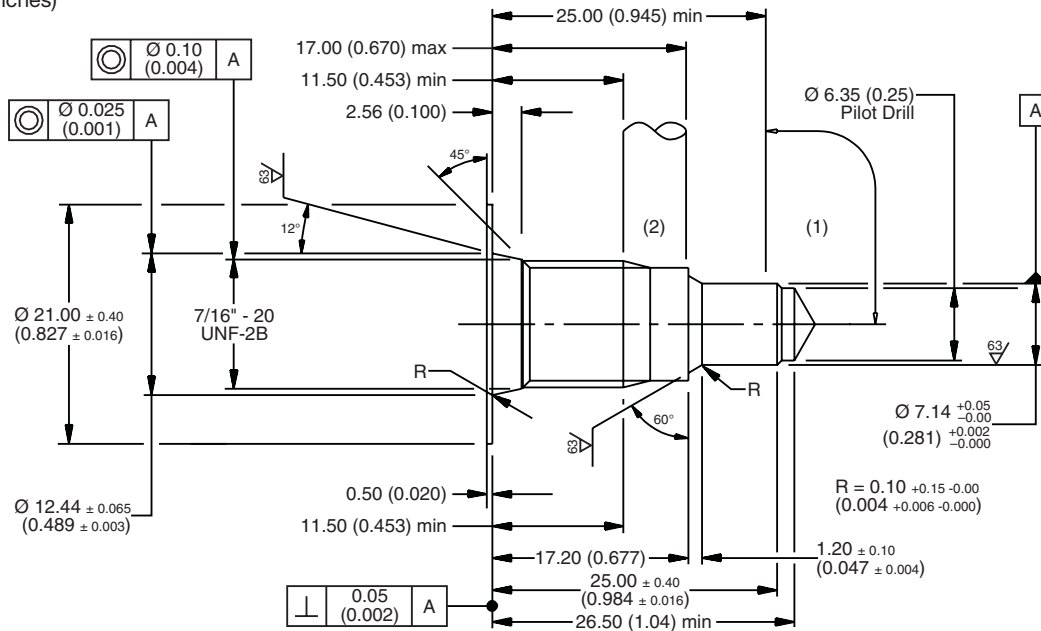


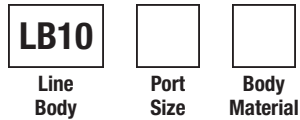
For additional information see Technical Tips on pages BC1-BC2.

Dimensions

Millimeters (Inches)



Ordering Information



Code	Port Size
795	1/4 SAE

Code	Body Material
A	Aluminum
S	Steel

Cavity Tooling For CAVOW-2	
Pilot Drill Ø	6.35 (0.25)
Step Drill	8DS31369
Reamer (Alum)	8RM31082A
Reamer (Steel)	8RM31082S
Counterbore	—
Tap	8TP31221

- CV
- Check Valves
- SH
- Shuttle Valves
- LM
- Load/Motor Controls
- FC
- Flow Controls
- PC
- Pressure Controls
- LE
- Logic Elements
- DC
- Directional Controls
- MV
- Manual Valves
- SV
- Solenoid Valves
- PV
- Proportional Valves
- CE
- Coils & Electronics
- CB
- Carpack Bodies
- BC
- Bodies & Cavities
- TD
- Technical Data